

Important notes:

- 1) Do NOT use pipe tape or sealant on any "swivel" fitting (anything with a rubber cone seal or flat washer in it)
- 2) Do NOT over tighten any of the fittings with rubber seals. Snug plus a little more is all that's needed to seal. Over torquing fittings can damage the seals
- 3) Hoses are all labeled and match the labels next to hoses on the diagram

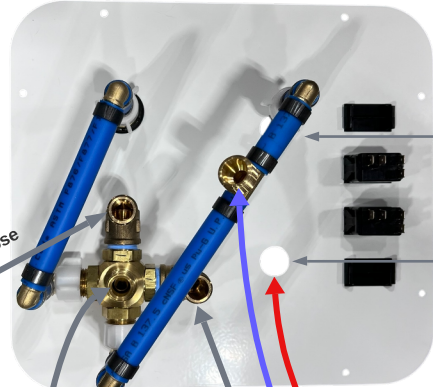
Testing

- 1) Turn the selector valve to "use tank"
- 2) Turn the water pump on.
- 3) Bleed air from each fixture by turning hot/cold on at sink, shower, rear shower, and flushing toilet until there's no air coming out
- 4) Leave pump on for 20 minutes and listen for the pump to cycle while visually checking for leaks. If the pump cycles, you may have a leak.

Scan here for instructions



Rear Manifold/Control Panel



Install Winnebago rear shower valve assembly into RoamRig panel and attach cold PEX manifold to shower valve assembly

Thread 1/2" swivel tee onto barb in tank and then attach "Tank" hose

"Tank" hose

"Pump In" hose

"Pump Out" hose

Drain hose

Water Tank

Thread 1/2" barb into tank using teflon pipe dope

Thread 1/2" NPT x 3/8" compression elbow into drain valve with teflon tape

Connect 72" cold to tee on PEX manifold. Twist tee as needed.

Connect 72" hot to Winnebago rear shower valve assembly that's been reinstalled in panel



Shower valve

Attach 72" Hot/Cold to existing shower valve using 90° swivel elbows

72" Cold

72" Hot

60' Hot/Cold are run under the floor from the driver's side of the van to the passenger side of the van

72" Cold

72" Hot

60" Hot

60" Cold

12" Hot

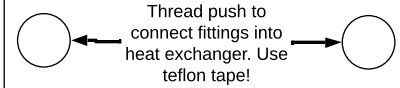
12" Cold

36" Cold

36" Hot

Connect 36" Hot/Cold lines from tee to kitchen sink using 3/8 compression to 1/2" FIP Adapters that are zip tied to each hose

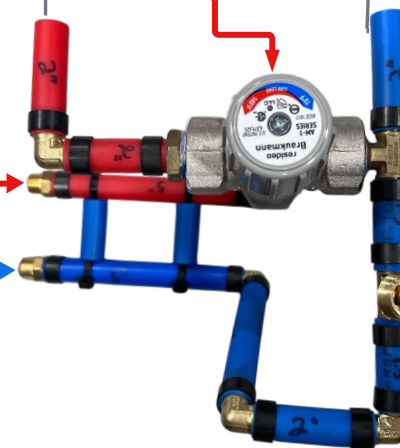
Heat Exchanger



Thread push to connect fittings into heat exchanger. Use teflon tape!

Push mixing valve assembly into push to connect fittings

Set mixing valve to SAME setting as the mixing valve removed!
Send old Mixing valve to RoamRig for core credit



Put toilet hose on 90° elbow using included crimp clamp

Thread 90° Elbow onto tee, do not overtighten